

BEYOND  
GREEN™



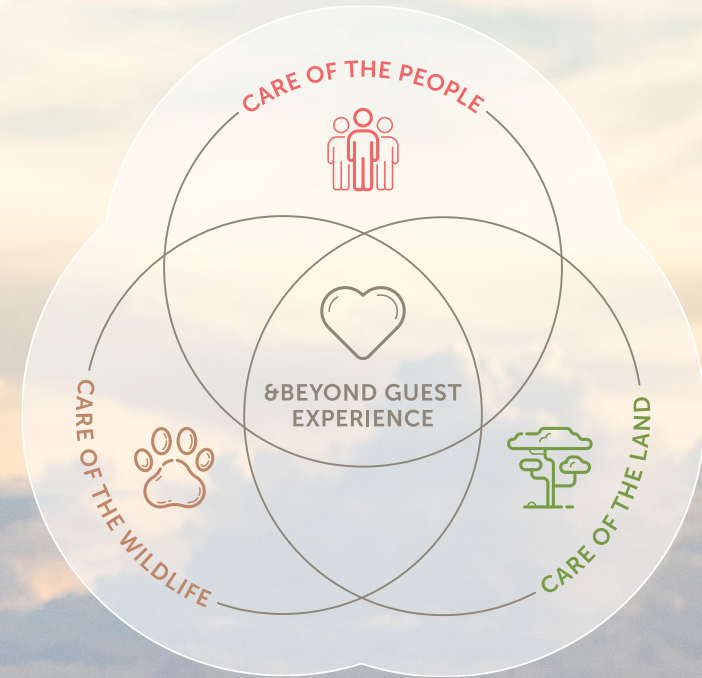
# Marine conservation in action

&Beyond Mnemba Island

---

DECEMBER 2022







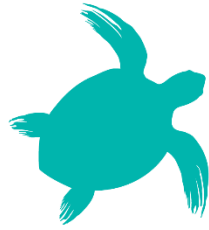
**AFRICA**  
FOUNDATION

in collaboration



**&BEYOND**





# OCEANS

WITHOUT BORDERS

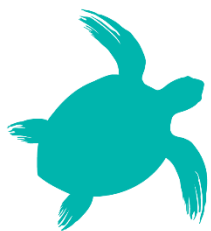


AFRICA  
FOUNDATION



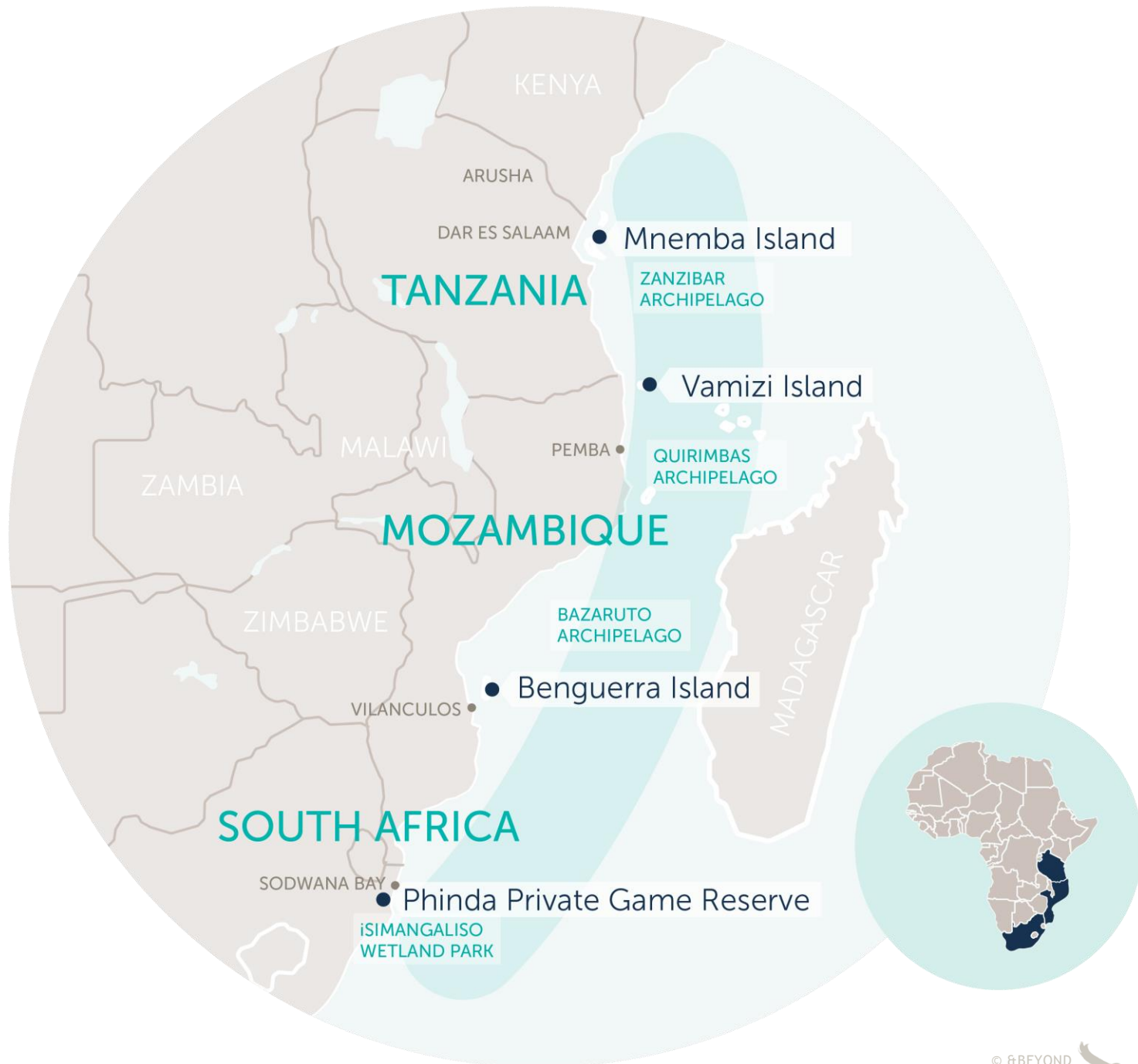
&BEYOND





# OCEANS

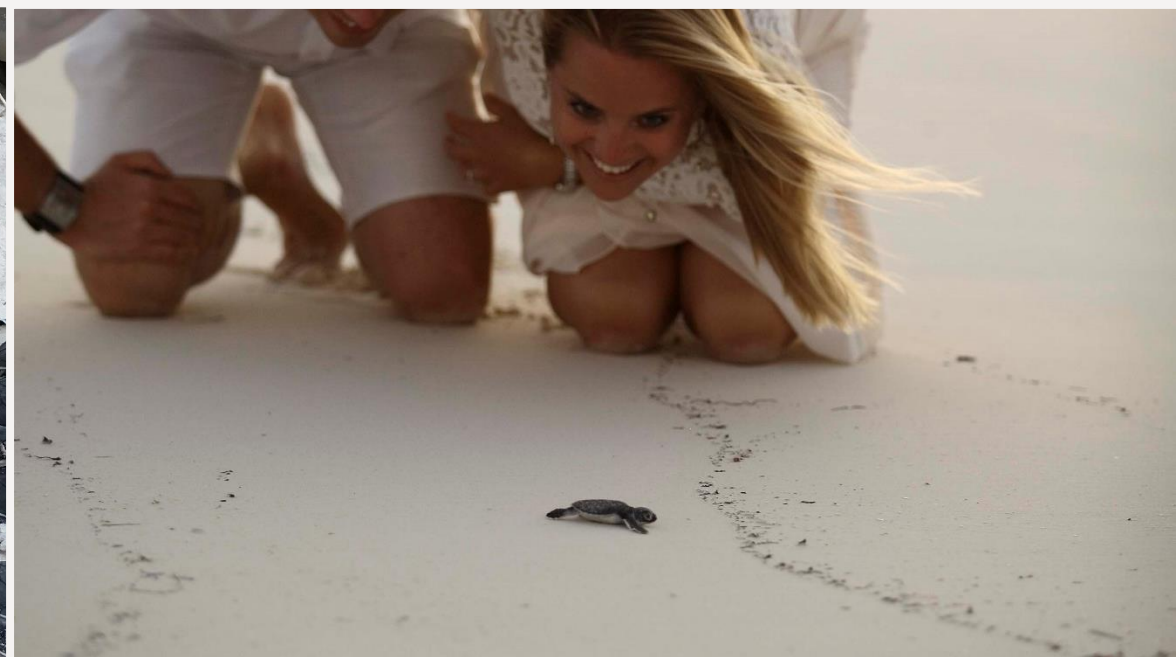
WITHOUT BORDERS





Sea turtle nest monitoring

---







# Explore 20+ years of our SEA TURTLE NESTING DATA

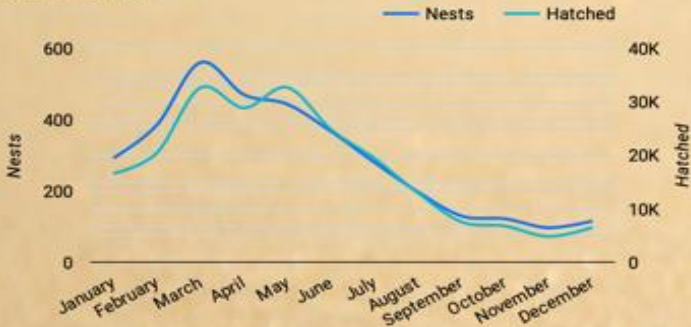
Select date range ▼

Island ▼

Our sites at Mnemba and Vamizi Islands in East Africa have among the longest continuously running sea turtle nest monitoring programmes in Africa. Mnemba is a regionally important breeding area for green turtles, while Vamizi is an internationally recognised site for both green and the Critically Endangered hawksbill turtle. Such longterm datasets provide critical information on turtle breeding biology, population status and habitat needs that underpin conservation efforts. **Explore data for each site by selecting a date range and island of interest.** The default setting summarises all data for both islands combined.

## WHEN DO TURTLES NEST?

Turtles nest year-round on both Vamizi & Mnemba Islands, though peak around March and April



## HOW LONG IS THE INCUBATION PERIOD?

The incubation period for green turtles can vary depending on environmental conditions such as temperature, humidity and nest depth.

Mean incubation time in days + (min & max)  
**62**  
(41 to 88)

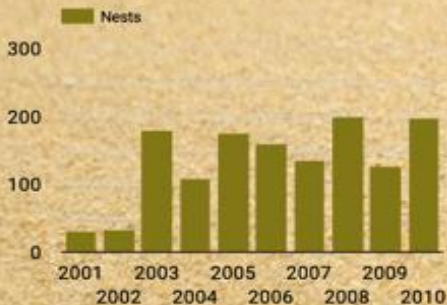
## HOW OFTEN DO TURTLES NEST?

Female green turtles return to the same beach they were born at to nest, often returning many times in the course of their breeding lifespan. On average, a female will lay 3-4 clutches in a year each 3-4 years. **What is the record number of nesting attempts by an individual at our sites?** Here are the TOP 5 with the number of recorded nesting attempts!

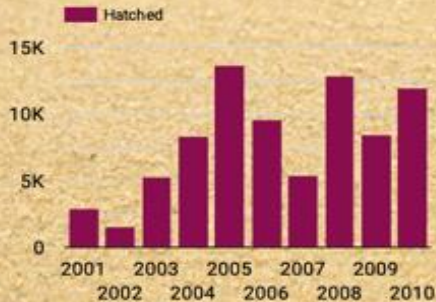
Turtle ID	Vamizi	Mnemba
VZ004	18	-
M0062	-	15
M0007	-	14
M0096	-	13
VZ170	10	-

## HOW MANY NESTS AND HATCHLINGS HAVE THERE BEEN?

Total number of nests  
**3,459**



Number of nests with hatchlings recorded  
**2,189**



Total number of hatchlings  
**214,071**



Mean number of hatchlings/nest  
**97.8**

## NUMBER OF FLOODED & RELOCATED NESTS

Beach erosion, sea level rise & storms can adversely impact nests through flooding. Nests may be relocated above high tide mark to maximise the chance of successful hatching

Flooded nests  
**272**

Re-located nests  
**26**





# Coral reef restoration project

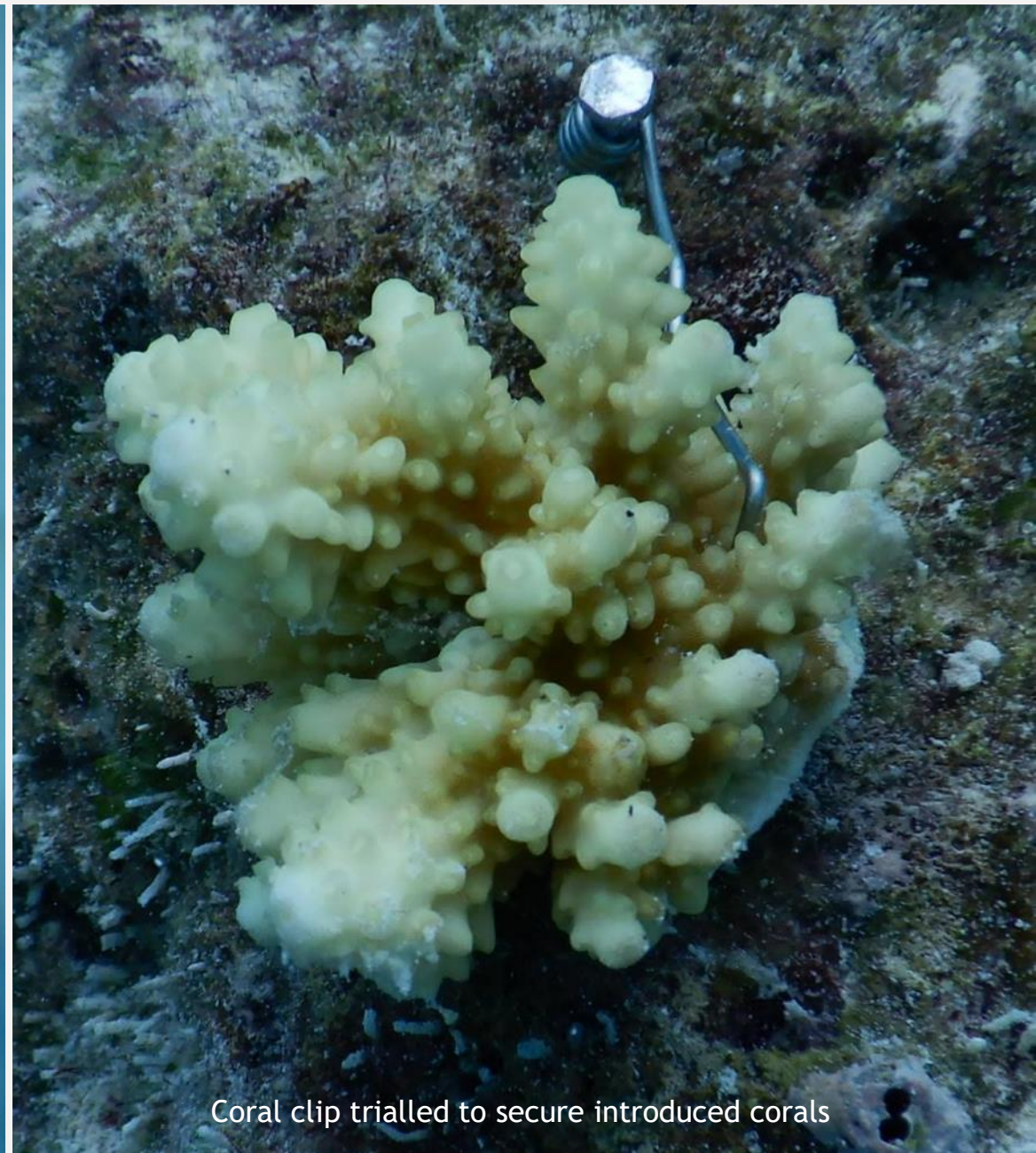
---







Out-planting of coral colonies from the nursery begins



Coral clip trialled to secure introduced corals





Thank you and any questions?

---